

CEIAG; Labour Market Information (LMI)

What is Labour Market Information?

Labour Market Information (LMI) refers to any relevant information about the current jobs market. LMI can include information like:

- What jobs and skills employers are looking for
- Which industries are hiring and where they are located
- What opportunities are out there for you and where to find employers who are hiring
- What the future trends are likely to be in different sectors
- What working conditions are like for specific industries
- What education, qualifications, skills and/or training you need for specific jobs
- What factors can stop you from getting a job
- Which job areas are growing in the future and other statistics
- How you need to prepare yourselves to compete for jobs in some sectors
- Career progression opportunities

Why is Labour Market Information Important to Young People?

LMI allows young people to research future jobs in the local area, understand the skills needed for certain roles and the demand for future employment.

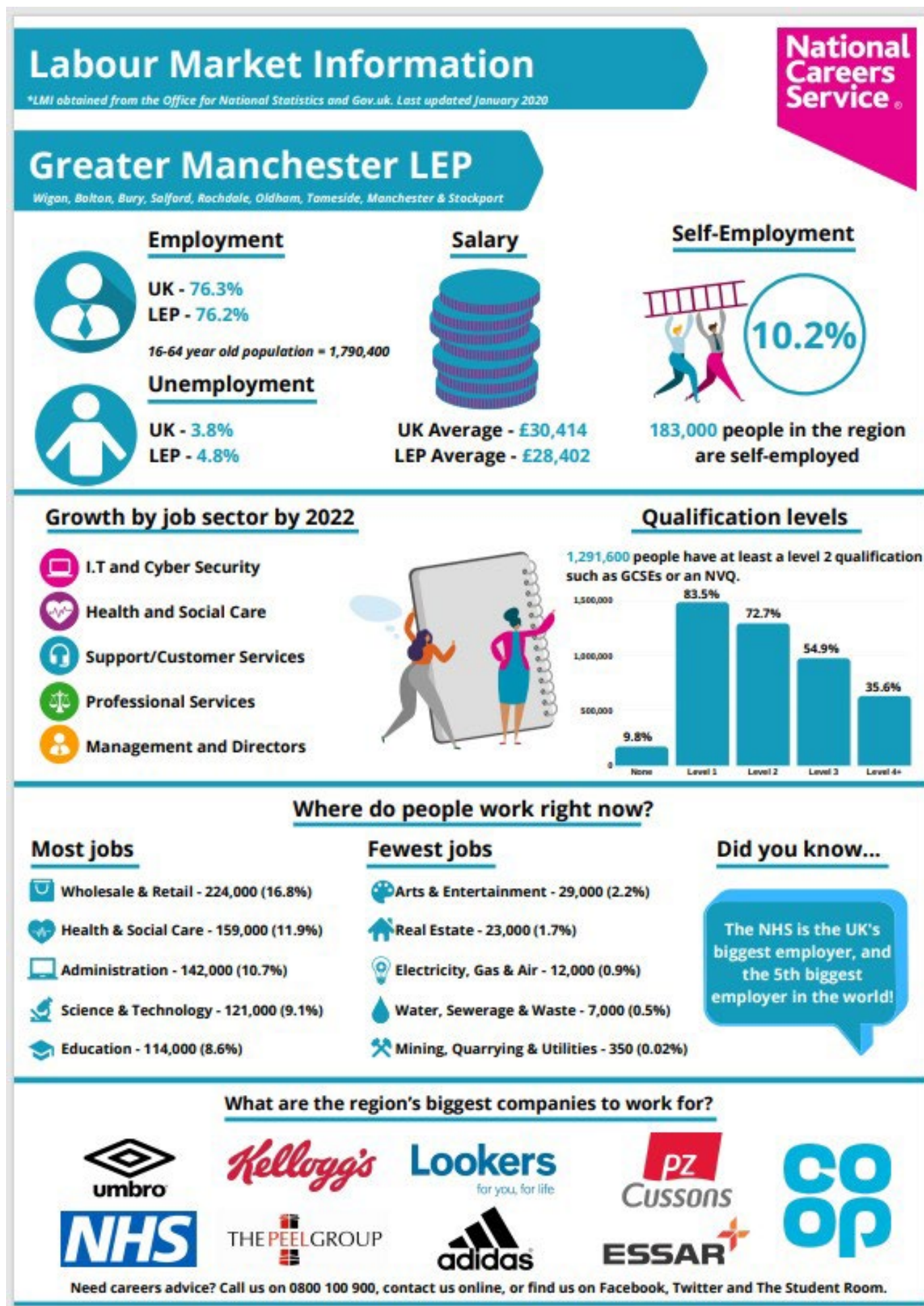
'It is vital, in an environment where new industries are emerging and many of the most important jobs of the future don't yet exist, that individuals have access to high-quality labour market information and earnings data to underpin their choices'. Anne Milton MP

What does Labour Market Information tell you?

Keeping up to date with what's happening in the labour market is important for anyone making careers related decisions about their future. Using LMI can help you to decide things like:

- Are there job opportunities for me where I live, or do I need to consider relocating for the career I want?
- Does the pay for my dream career align with how much I'd like to earn? If not, am I okay with that?
- How long will it take me to rise through the ranks in my career to my desired position, and am I willing to do the work to get there?
- How competitive is my industry? Do I have a backup plan if it doesn't work out in the way I want it to?
- Is college, university, an apprenticeship, or working my way up from an entry level job the right path for me?

The information below was collated by the Office for National Statistics in January 2020 in relation to local LMI:



What are the region's biggest companies to work for?












Need careers advice? Call us on 0800 100 900, contact us online, or find us on Facebook, Twitter and The Student Room.

Here is a short video by the [National Careers Service](#) enabling you to find out more information about the labour market and how to use it to get further in a chosen career path.

National Careers Service - Labour Market Information

<https://video.link/w/kpazd>

In relation to providing data for the local LMI landscape, [BridgeGM](#), part of Greater Manchester Combined Authority (GMCA) work within the local authorities to support young people to learn the skills right now that they will need later in working life.



<https://bridgegm.co.uk/labour-market-information>

<https://bridgegm.co.uk/resources>

The Derby High School works alongside a GM Careers and Enterprise Adviser and ensures that students have access to LMI across a variety of platforms:

- In the school's Careers Hub
- On the school's Careers e-Hub
- On the school website
- Through active access to online tools
- Through KS4 college taster days and work experience
- Involvement with external partnership activities
- Through teaching and learning into teaching and learning
- Displays around the school site

Explore other websites that present information on the UK labour market



Website:

[Careers - BBC Bitesize](https://www.bbc.com/careers)

[Bitesize Careers](https://www.bbc.com/careers) supports those deciding what to study, taking exams, planning a career, or just curious about the world of work, with advice from people who have found the right path for them.

It provides a range support, tips and advice, as well information on a number of job profiles. LMI for All data are used in these job profiles.



Website:

[home - icould](https://www.icould.co.uk)

[icould](https://www.icould.co.uk) is a careers website which uses LMI for All to provide context alongside careers videos.

icould uses real voices to help young people learn more about the world of work. Using video interviews, the free-to-use website offers unique insight into the day to day roles and career pathways of people working in a range of jobs.

icould includes over 1,000 careers video stories that provide a real view of what it is like to work in particular jobs.

Articles on a range of topics are available from people sharing their experiences, together with advice from industry experts. More information on its development and use of LMI for All is available [here](#).



PROSPECTS

Website:
[Prospects.ac.uk](https://prospects.ac.uk)

[Prospects](https://prospects.ac.uk) is a career website that guides millions of students to make the right choices for them.

Match your skills and personality to 400+ job profiles.

Browse job profiles by sector or by letter, employer profiles and job profiles.

If you've ever wondered, "what could I do with a certain degree?" Prospects is the site for you. Take the quiz or use the Career Planner to start working out where you want to go.



Website:
sacu-student.com

[SACU](https://sacu-student.com) is an online source of careers information for young people, parents, teachers and careers advisers.

SACU provides a range of careers tools and services for the education sector with the aim of supporting students make better choices.

For students, there is: a careers quiz which matches them to higher education courses, careers and apprenticeships; an A Level Match tool; and a personal statement inspiration tool with helps with a UCAS statement.

The labour market explore tool uses LMI for All data to power its interactive tool.



Website:
[start | U-Explore](#)

[Start by U-Explore](#) offers students personalised information and opportunities which take account of who they are, where they start from and where they want to go.

It builds on longstanding career assessment practices by building a personal profile of work preferences, qualities, skills and interests and using this to match users to jobs and learning opportunities based on their suitability and how available those jobs are in the labour market.

The software not only provides factual information from LMI for All and other high quality sources. More information on its development and use of LMI for All is available [here](#).



National Careers Service

Website:
[National Careers Service](#)

[The National Careers Service](#) offers over 800 job profiles on its website.

They provide careers information, advice and guidance and help people to make decisions on learning, training and work at all stages in their career.

Under each profile you'll learn about the average salary, working hours, typical duties, and routes into the profession. Here's an example:

Large goods vehicle driver

LGV driver, HGV driver, lorry driver

Large goods vehicle (LGV) and heavy goods vehicle (HGV) lorry drivers transport and deliver goods between suppliers and customers.

Average salary (a year)



£19,000

£36,000

Starter

Experienced

Typical hours (a week)



38 to 52

a week

You could work



evenings / weekends /
bank holidays
away from home

Open all

How to become

Explore the different ways to get into this role.

What it takes

Find out what skills you'll use in this role.

What you'll do

Discover the day to day tasks you'll do in this role.

Career path and progression

Look at progression in this role and similar opportunities.

Current opportunities

Find apprenticeships, courses and jobs available near you.

Not what you're looking for?

Search further careers

Enter a job title



Related careers

[Tanker driver](#)

[Delivery van driver](#)

[Removals worker](#)

[Bus or coach driver](#)

[Train driver](#)

Skills assessment

This document has been produced by Students' Aspirations Lead and was correct at the time of writing, as of October 2022. Website links were also correct but the content and address can be subject to change and are out of the control of the writer. Content and links will be checked and updated yearly.